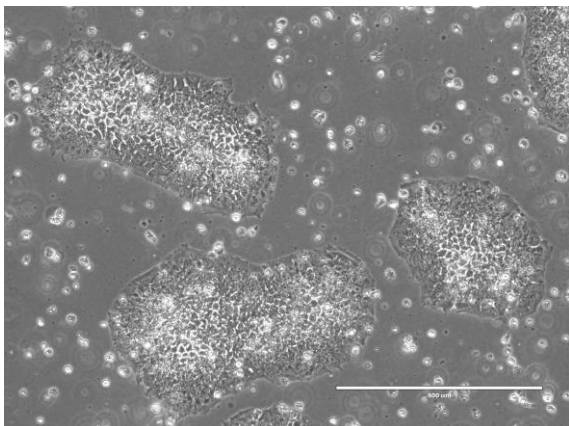
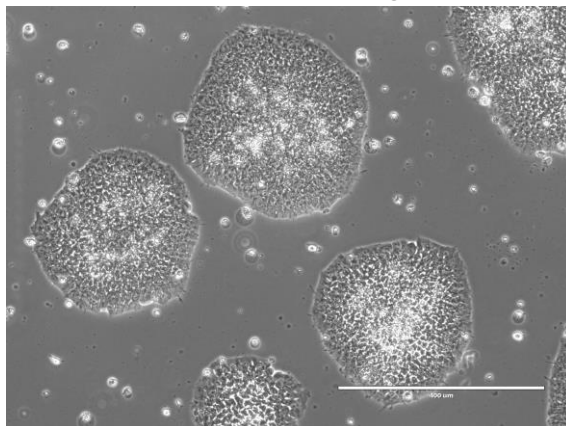


## 【 CiRA-j-1185 】 Morphology of iPSC colonies

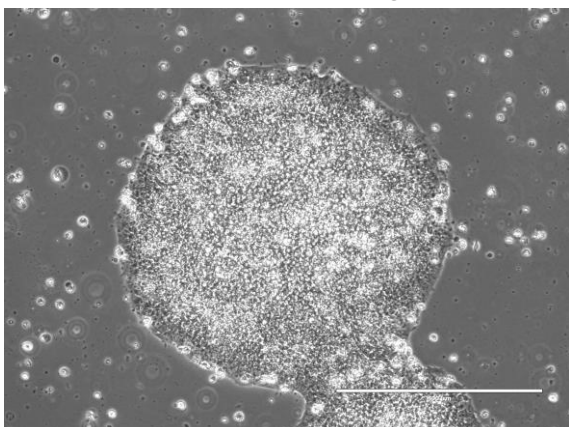
CiRA-j-1185-A: passage-3



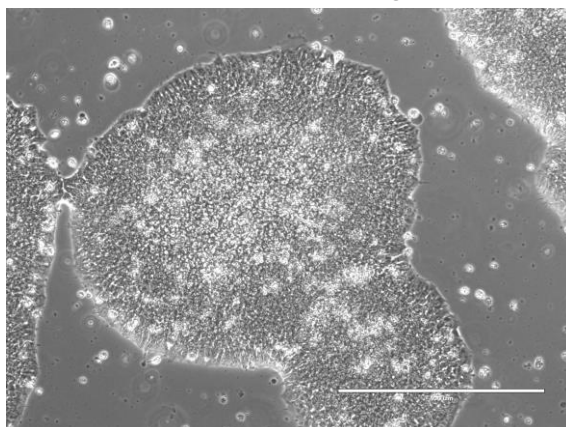
CiRA-j-1185-B: passage-3



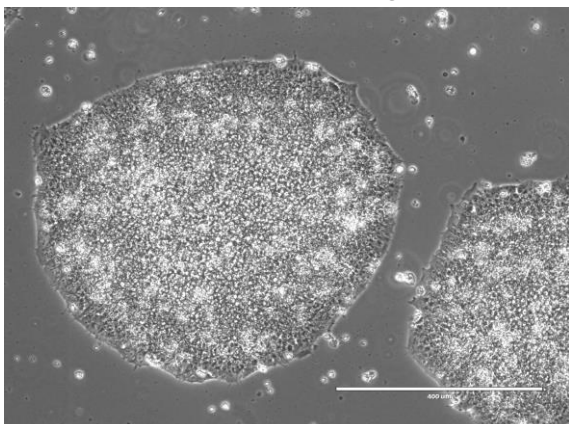
CiRA-j-1185-C: passage-3



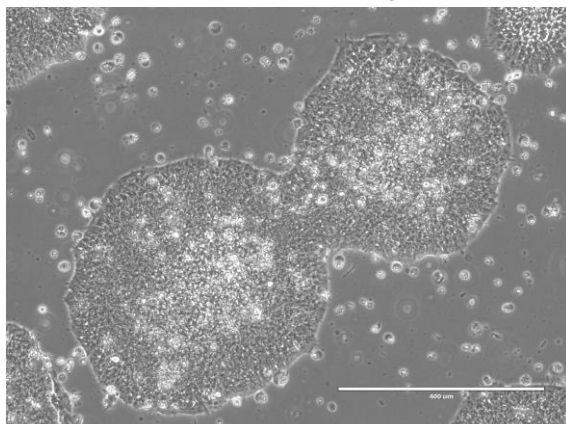
CiRA-j-1185-D: passage-3



CiRA-j-1185-E: passage-3



CiRA-j-1185-F: passage-3



( All images were captured at 4x magnification )